

When you need a High Quality Opening

Alfa Laval Access Tank Cover - Circular Cover Type LKDC

5.8

Application

The circular LKDC stainless steel manhole cover is used on top of tanks or containers, especially in the dairy industry, where a hygienic closeable mean of access to the interior of the tank is required.

Working principle

The LKDC cover is supplied with a unique replaceable, self-sealing double lip seal (see fig. 2.) to prevent fluids from spraying out, e.g. during CIP cleaning and similar processes or during travel on mobile tanks or road tankers. The seals are produced in compliance with 3A recommendations.

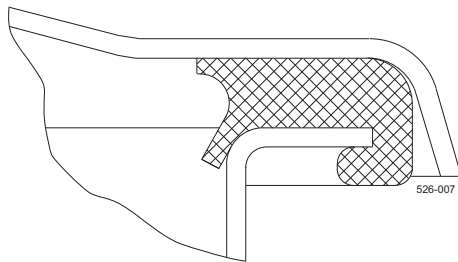


Fig. 2. Double lip seal

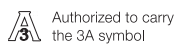
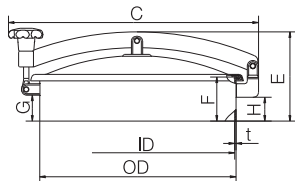


TECHNICAL DATA

Working pressure: No pressure

Certificates

3.1 certificate



Dimensions (mm)

Size/OD	202	306	404	454	454	518	518	620	620
ID	198	302	400	448	448	510	510	614	614
F	85	100	100	100	200	100	200	100	200
t	2	2	2	3	3	3	3	3	3
C	354	457	555	609	609	675	675	778	778
G	48	64	64	60	160	55	155	64	164
H	43	64	59	60	160	56	156	59	159
E	156	146	178	201	301	197	297	203	303
Cover thickness	1.5	1.5	2	2	2	3	3	3	3
Weight (kg)	3.4	6.3	8.3	12.2	15.8	14.4	17.7	18.8	24.3

PHYSICAL DATA

Materials

Lid and frame: 1.4301 (304) or 1.4404 (316L)
 Plastic parts: Nylon
 Seals: EPDM or NBR or FPM or Q (silicone)

Surface finish: Acid Pickled
 Product wetted surfaces: Ra 0.8µm
 Other surfaces: Ra 0.8µm
3A surface finish: Electro polished
 Product wetted surfaces: Ra 0.4µm
 Other surfaces: Ra 3.0µm

Temperature

Min. temperature: - 20°C

Max. temperature: + 90°C (NBR)

(Q) gasket + 100°C
 (EPDM, not for oil and fat) + 140°C
 (FPM flourinated rubber) + 140°C

Non pressure
Product code: 5515

Surface finish: Acid pickled
Product wetted surfaces: Ra 0.8µm
Other surfaces: Ra 3.0µm

5.8

Item No.	PPL EUR	Item No.	PPL EUR	Handle	Size		Dimension (mm)							
					ID	OD	C	E	F	G	H	t		
1.4301 (304) EPDM		1.4301 (304) NBR											Circular cover LKDC-202	
9613436701 9613436721	541	9613436702 9613436722	541	(p) (ss)	198	202	354	156	85	48	43	2		
1.4404 (316L) EPDM		1.4404 (316L) NBR												
9613436711 9613436731	591	9613436712 9613436732	591	(p) (ss)	198	202	354	156	85	48	43	2		
1.4301 (304) FPM		1.4301 (304) Q												
9613436703 9613436723	746	9613436704 9613436724	647	(p) (ss)	198	202	354	156	85	48	43	2		
1.4404 (316L) FPM		1.4404 (316L) Q												
9613436713 9613436733	796	9613436714 9613436734	697	(p) (ss)	198	202	354	156	85	48	43	2		
1.4301 (304) EPDM		1.4301 (304) NBR												Circular cover LKDC-306
9613436801 9613436821	684	9613436802 9613436822	684	(p) (ss)	302	306	457	146	100	64	64	2		
1.4404 (316L) EPDM		1.4404 (316L) NBR												
9613436811 9613436831	758	9613436812 9613436832	758	(p) (ss)	302	306	457	146	100	64	64	2		
1.4301 (304) FPM		1.4301 (304) Q												
9613436803 9613436823	913	9613436804 9613436824	794	(p) (ss)	302	306	457	146	100	64	64	2		
1.4404 (316L) FPM		1.4404 (316L) Q												
9613436813 9613436833	988	9613436814 9613436834	868	(p) (ss)	302	306	457	146	100	64	64	2		
1.4301 (304) EPDM		1.4301 (304) NBR											Circular cover LKDC-404	
9613436901 9613436921	772	9613436902 9613436922	772	(p) (ss)	400	404	555	178	100	64	59	2		
1.4404 (316L) EPDM		1.4404 (316L) NBR												
9613436911 9613436931	849	9613436912 9613436932	849	(p) (ss)	400	404	555	178	100	64	59	2		
1.4301 (304) FPM		1.4301 (304) Q												
9613436903 9613436923	1014	9613436904 9613436924	875	(p) (ss)	400	404	555	178	100	64	59	2		
1.4404 (316L) FPM		1.4404 (316L) Q												
9613436913 9613436933	1091	9613436914 9613436934	962	(p) (ss)	400	404	555	178	100	64	59	2		

(ss) version is with stainless steel handle

(p) version is with plastic handle

Circular Cover Type LKDC

Tank Covers

Non pressure
Product code: 5515

Surface finish: Acid pickled
Product wetted surfaces: Ra 0.8µm
Other surfaces: Ra 3.0µm

5.8

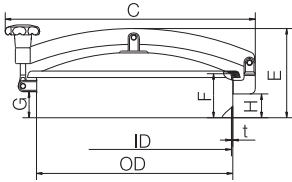
Item No.	PPL EUR	Item No.	PPL EUR	Han- dle	Size		Dimension (mm)							
					ID	OD	C	E	F	G	H	t		
1.4301 (304) EPDM		1.4301 (304) NBR												
9613437001	821	9613437002	821	(p)	448	454	609	201	100	60	60	3		
9613437041		9613437042		(ss)										
9613437021	957	9613437022	957	(p)	448	454	609	301	200	160	160	3		
9613437061		9613437062		(ss)										
1.4404 (316L) EPDM		1.4404 (316L) NBR												
9613437011	955	9613437012	955	(p)	448	454	609	201	100	60	60	3		
9613437051		9613437052		(ss)										
9613437031	1101	9613437032	1101	(p)	448	454	609	301	200	160	160	3		
9613437071		9613437072		(ss)										
1.4301 (304) FPM		1.4301 (304) Q												
9613437003	1199	9613437004	974	(p)	448	454	609	201	100	60	60	3		
9613437043		9613437044		(ss)										
9613437023	1335	9613437024	1111	(p)	448	454	609	301	200	160	160	3		
9613437063		9613437064		(ss)										
1.4404 (316L) FPM		1.4404 (316L) Q												
9613437013	1333	9613437014	1108	(p)	448	454	609	201	100	60	60	3		
9613437053		9613437054		(ss)										
9613437033	1479	9613437034	1254	(p)	448	454	609	301	200	160	160	3		
9613437073		9613437074		(ss)										
1.4301 (304) EPDM		1.4301 (304) NBR												
9613437101	903	9613437102	903	(p)	512	518	675	197	100	55	56	3		
9613437141		9613437142		(ss)										
9613437121	985	9613437122	985	(p)	512	518	675	297	200	155	156	3		
9613437161		9613437162		(ss)										
1.4404 (316L) EPDM		1.4404 (316L) NBR												
9613437111	1042	9613437112	1042	(p)	512	518	675	197	100	55	56	3		
9613437151		9613437152		(ss)										
9613437131	1137	9613437132	1137	(p)	512	518	675	297	200	155	156	3		
9613437171		9613437172		(ss)										
1.4301 (304) FPM		1.4301 (304) Q												
9613437103	1092	9613437104	1064	(p)	512	518	675	197	100	55	56	3		
9613437143		9613437144		(ss)										
9613437123	1162	9613437124	1146	(p)	512	518	675	297	200	155	156	3		
9613437163		9613437164		(ss)										
1.4404 (316L) FPM		1.4404 (316L) Q												
9613437113	1211	9613437114	1202	(p)	512	518	675	197	100	55	56	3		
9613437153		9613437154		(ss)										
9613437133	1300	9613437134	1298	(p)	512	518	675	297	200	155	156	3		
9613437173		9613437174		(ss)										

(ss) version is with stainless steel handle

(p) version is with plastic handle

Non pressure
Product code: 5515

Surface finish: Acid pickled
Product wetted surfaces: Ra 0.8µm
Other surfaces: Ra 3.0µm

Item No.	PPL EUR	Item No.	PPL EUR	Handle	Size		Dimension (mm)						Circular cover LKDC-620
1.4301 (304) EPDM		1.4301 (304) NBR											
9613437201	1022	9613437202	1022	(p)	614	620	778	203	100	64	59	3	
9613437241		9613437242		(ss)									
9613437221	1112	9613437222	1112	(p)	614	620	778	303	200	164	159	3	
9613437261		9613437262		(ss)									
1.4404 (316L) EPDM		1.4404 (316L) NBR											
9613437211	1173	9613437212	1173	(p)	614	620	778	203	100	64	59	3	
9613437251		9613437252		(ss)									
9613437231	1283	9613437232	1283	(p)	614	620	778	303	200	164	159	3	
9613437271		9613437272		(ss)									
1.4301 (304) FPM		1.4301 (304) Q											
9613437203	1429	9613437204	1186	(p)	614	620	778	203	100	64	59	3	
9613437243		9613437244		(ss)									
9613437223	1518	9613437224	1275	(p)	614	620	778	303	200	164	159	3	
9613437263		9613437264		(ss)									
1.4404 (316L) FPM		1.4404 (316L) Q											
9613437213	1580	9613437214	1337	(p)	614	620	778	203	100	64	59	3	
9613437253		9613437254		(ss)									
9613437233	1690	9613437234	1446	(p)	614	620	778	303	200	164	159	3	
9613437273		9613437274		(ss)									

5.8

(ss) version is with stainless steel handle

(p) version is with plastic handle