

# When you need a High Quality Opening

## Alfa Laval Access Tank Cover - Circular Cover Type LKDS

5.8

**Application**

The circular LKDS stainless steel manhole cover is used on top of tanks or containers where a closeable mean of access to the interior of the tank is required, and is especially suitable for dairy balance tanks and CIP holding tanks.

**Working principle**

The LKDS cover is not designed to fit watertight to the tank and therefore it is supplied with a splash guard to prevent liquid spraying out during a cleaning process.



**TECHNICAL DATA**

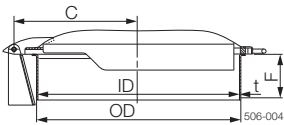
Working pressure: . . . . . No pressure

**Certificates**

3.1 certificate

**Dimensions (mm)**

| Size/OD         | 454 | 454 |
|-----------------|-----|-----|
| ID              | 448 | 448 |
| F               | 24  | 100 |
| t               | 3   | 3   |
| C               | 272 | 272 |
| Cover thickness | 2   | 2   |



**PHYSICAL DATA**

**Materials**

Lid and frame: . . . . . 1.4301 (304) or 1.4404 (316L)

**Surface finish:** . . . . . Acid Pickled

Product wetted surfaces: . . . . Ra 0.8µm

Other surfaces: . . . . . Ra 3.0µm

**Temperature**

Min. temperature: . . . . . - 20°C

Max. temperature: . . . . . + 90°C

**Weight:** . . . . . 5 / 6 kg