

# The Perfect Support for Your Tank

## Alfa Laval LKTC Tank Leg

5.7

**Application**

Stainless steel tank leg type LKTC is used for free standing stainless steel tanks or vessels where adjustable supports is necessary to ensure stability.

**Standard design**

LKTC consists of a cylindrical welding piece with an internal thread which takes an adjustable cylinder-shaped spindle. LKTC is designed so that it can stand either on the floor or on a stainless steel baseplate. The baseplate has a ball socket and is used where the floor is not completely horizontal to ensure stable support. The design ensures that the legs are easy to clean.



**TECHNICAL DATA**

Size	Max. static load (N)	Floor area of baseplate (mm <sup>2</sup> )
¾"	75000	2600
1"	100000	5000
1½"	160000	7800

**PHYSICAL DATA**

**Materials**

Steel parts: . . . . . Stainless steel AISI 304.  
 Finish: Base plate: . . . . . Mat.  
 Other parts: . . . . . Semi bright.

Dimensions (mm)

Size	¾"	1"	1½"
A	38	53	80
B	35.5	39.8	65.3
C	58	80	100
D	¾"	1"	1½"
E	35	40	45
F	5	5	5
Lmin.	20	20	20
Lmax.	35	50	60
R	15	15	25
T	4	6	8
Weight	0.35	0.60	1.67
(kg)	0.43*	0.83*	2.25*

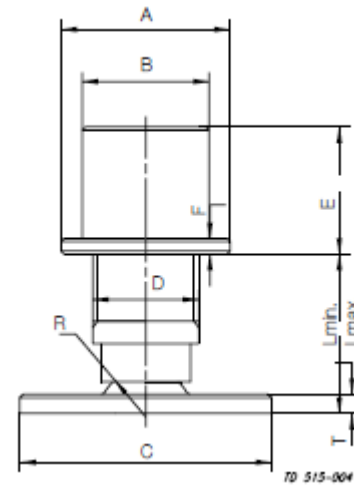
Ordering

Tanklegs without base plate

¾"	9611-71-029-0
1"	9611-71-030-0
1½"	9611-71-032-0

Tanklegs with base plate

¾"	9611-71-022-0
1"	9611-71-023-0
1½"	9611-71-025-0



# Tank Legs and Base Plate

Tank Accessories

Product code: 5534

Material: 1.4301 (304)

5.7

Item No.	PPL EUR	Dimension (mm)					LKTC Tank leg with base plate
		A	B	C	D (BSP)	E	
9611710220	<b>88</b>	38	35.5	58	3/4"	35	
9611710230	<b>117</b>	53	39.8	80	1"	40	
9611710250	<b>176</b>	80	65.3	100	1 1/2"	45	
<b>LKTC Tank leg without base plate</b>							
9611710290	<b>76</b>	38	35.5		3/4"	35	
9611710300	<b>104</b>	53	39.8		1"	40	
9611710320	<b>155</b>	80	65.3		1 1/2"	45	
<b>Base plate</b>							
9611710370	<b>12</b>			58			
9611710400	<b>13</b>			80			
9611710430	<b>27</b>			100			

Item No.	PPL EUR	Size	Dimension (mm)					Max. load	
			A	B	C	D	SW		
<b>Tank leg complete</b>									
9612390801	68	½"						4.0	
9612390802	74	¾"					6.0		
9612390803	98	1"					8.0		
9612390804	166	1¼"					15.0		
9612390805	182	1½"					19.0		
<b>Tank leg complete</b>									
9612367301	21	½"	100	70					
9612367302	23	¾"	100	70					
9612367303	34	1"	120	90					
9612367304	63	1¼"	150	120					
9612367305	65	1½"	150	120					
<b>Socket</b>									
9612367501	12	½"	30	25	17	35			
9612367502	17	¾"	38	32	17	35			
9612367503	25	1"	46	39.5	17	35			
9612367504	33	1¼"	56	49.5	20	40			
9612367505	42	1½"	63	57	25	50			
<b>Lock nut</b>									
9612367401	7	½"	8				32		
9612367402	8	¾"	9				36		
9612367403	10	1"	11				41		
9612367404	17	1¼"	12				55		
9612367405	21	1½"	15				60		
<b>Base plate</b>									
3180153901	28	½" - 1"	120	5	32	12			
3180153902	54	1¼" - 1½"	160	8	50	14			